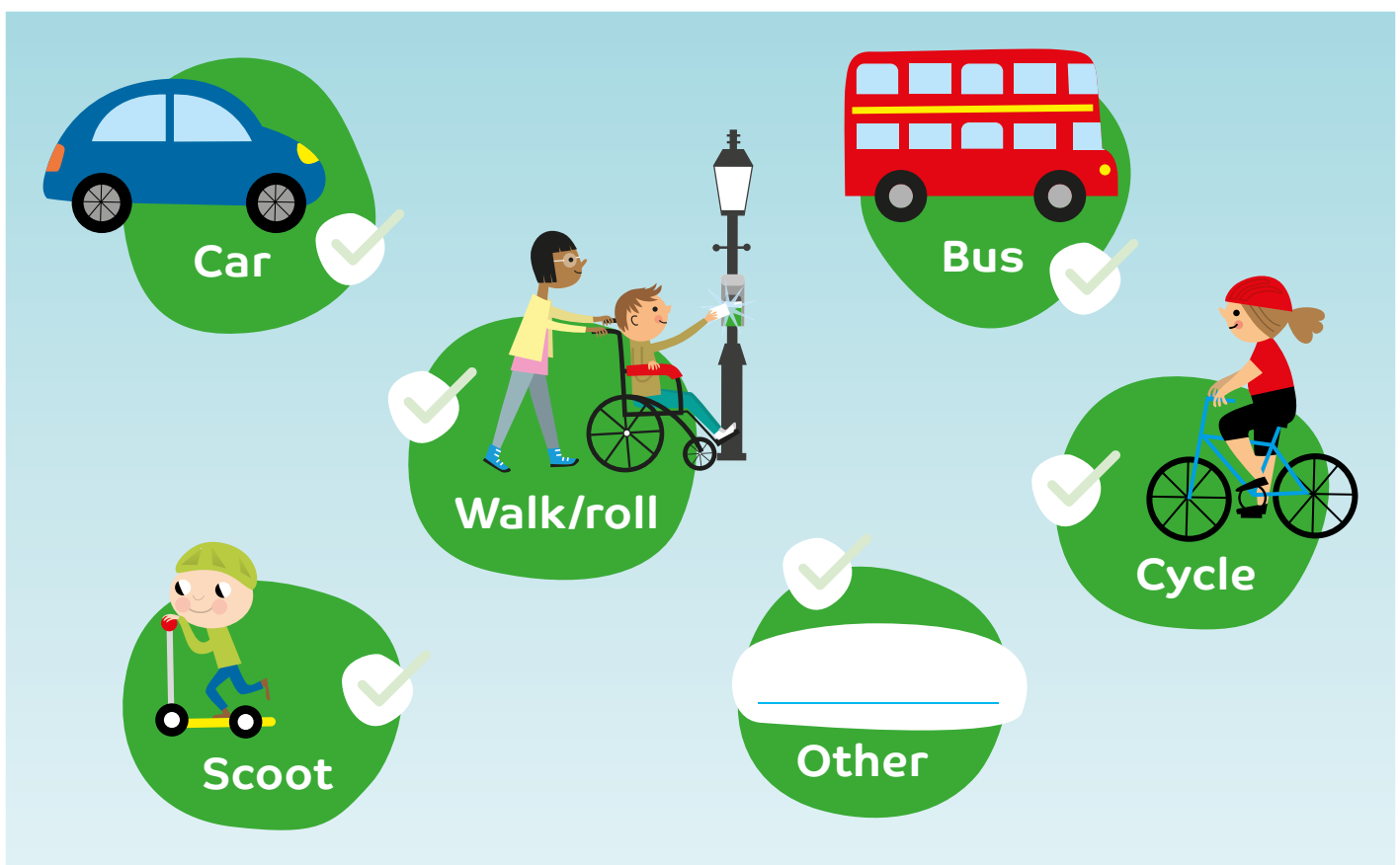




Planning your Beat the Street route

How do you get to school?



Go to beatthestreet.me/rotherham/map

With the help of your parent/carer, can you find your house and school on the map?

Take a note of the Beat Box numbers you pass on the way to school.

Visit beatthestreet.me/rotherham or email team.rotherham@beatthestreet.me

Can you find a way to get an extra box?

Use our table below for ideas.

How you get to school

Bus

Ideas to get more Boxes

Get off a stop earlier or walk to a stop further away

Car

Ask your parent/carer to park a bit further away from the school, or try walking the whole way instead!

Walk/cycle/scoot/roll

Try going a different route, or see if you can go a bit further

Questions

Can you find your nearest park?

How many roads are there on your route to school?

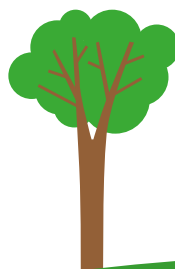
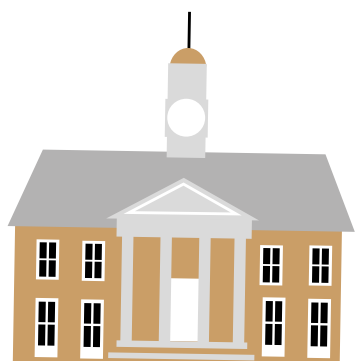
Can you cross these roads safely e.g pedestrian crossings or traffic lights

Is there a safer route you could go?

Is there a route with no roads to school?

How many Boxes are on your route?

Could you walk somewhere different with your family at the weekend?



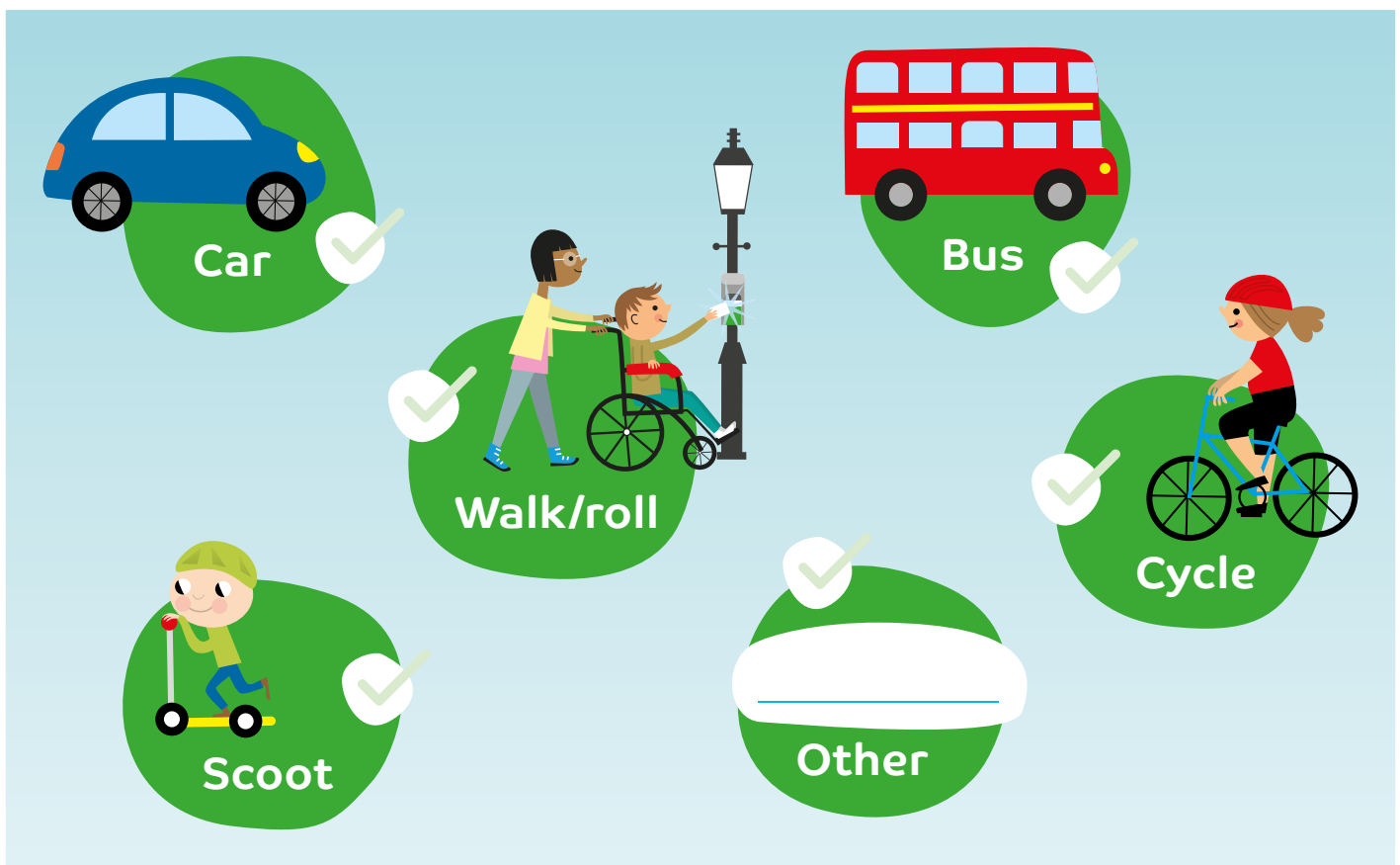
Visit beatthestreet.me/rotherham or email team.rotherham@beatthestreet.me

 @btsrotherham  @btsrotherham  @btsrotherham



Planning your Beat the Street route

How do you get to school?



Go to beatthestreet.me/rotherham/map

With the help of your parent/carer, can you find your house and school on the map?

What about your house?

Visit beatthestreet.me/rotherham or email team.rotherham@beatthestreet.me

How far is it between your house and school?

How many Beat Boxes are on your way to school?

Can you find a way to get an extra box?

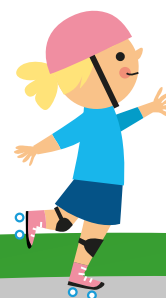
Use our table below for ideas.

How you get to school	Ideas to get more Boxes
Bus	Get off a stop earlier and walk to a stop further away
Car	Ask your parent/carer to park a bit further away from the school
Walk/cycle/scoot/roll	Try going a different route, or see if you can go a bit further

Creative challenge

Using the Beat Box map can you join the Boxes to create the best looking route?

Here's an example:



Visit beatthestreet.me/rotherham or email team.rotherham@beatthestreet.me

 @btsrotherham  @btsrotherham  @btsrotherham



Have a sticky adventure in your local green space!

Putting your Stick Family together

1. At home put your family sticks in family order.
2. Gather useful craft materials like: blu tac, plasticine, string, pipe cleaners, sellotape, PVA glue, paper, tissue paper, wool, fabric, felt, glitter, stickers, felt tips, paints and crayons and googly eyes.
3. Use glue, plasticine, string, blu tac, pipe cleaners, sellotape or wool to hold the sticks together in the shape of the people and animals in your family.
4. Decorate your sticks using all the materials you have available. Go wild with woolly hair, paper outfits and colourful clothing!
5. When you've finished, take a photo of your stick family. How does your new family portrait look?



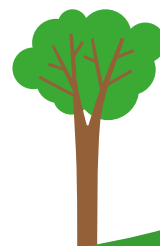
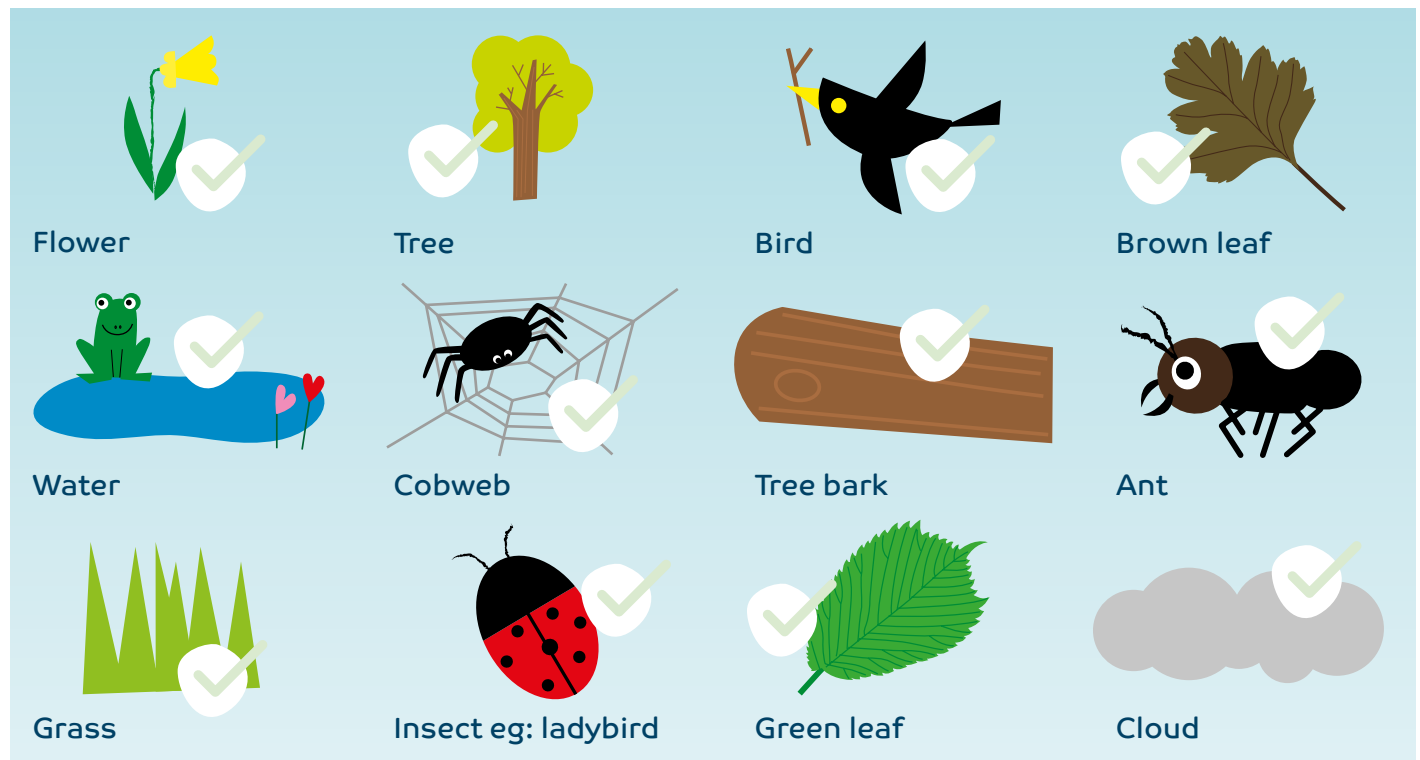
Suitable
for all
ages



Scavenger hunt

Try to find all the items on the list

Get outside in your local green space and see how quickly you can find these items and tick them off. Take a picture of what you find and ask your parent or carer to post a picture on our Beat the Street social media pages (see the links at the bottom of this page) so we can see how well you do!



Visit beatthestreet.me/rotherham or email team.rotherham@beatthestreet.me

 @btsrotherham  @btsrotherham  @btsrotherham