



St Alban's CE Primary School SEND Newsletter

January 2025

Welcome

Welcome to the first issue of the St Alban's SEND newsletter. Following feedback from parents, we are going to do more to share what we do at St Alban's for pupils with SEND that makes us such a special place. We will also share information about staff training, useful links, tips to try at home and changes to any school policies relating to SEND.

Any queries or questions related to SEND can always be sent to sendco@sap.dsat.education

Mrs Cooper and the St Alban's Team

Essential for Some, Good for All

St Alban's is proud to be part of the Diocese of Sheffield Academy Trust (DSAT). As part of this, we have pledged to uphold their 'Vulnerable Pupil Charter'. This outlines how, by putting things in place that benefit vulnerable pupils, we also benefit the rest of the school community.

Examples of this that you might see in one of our classrooms:

- The interactive board will never have a white background, as this can be challenging for pupils with dyslexic tendencies.
- Every classroom has at least one visual timetable (see overleaf for more info).
- Staff use the PACE approach when dealing with dysregulated pupils – Playfulness, Acceptance, Curiosity and Empathy.



Hands on experiences benefit all pupils, whether they have SEND or not.



Did you know?

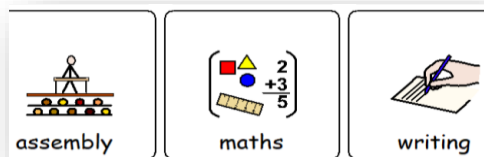
Training to be a SENDCo takes a long time, and extra qualifications. Mrs Cooper is a qualified SENDCo with the University of Huddersfield after studying hard while teaching Y6!

It's not a race...it's a journey

What are.... Visual Timetables?

No one likes to be uncertain about what happens in their day, and children are no different. The use of timetables extends throughout life- and with good reason! Knowing what comes next helps us to mentally prepare for the day. It can inspire us to get through the tough parts in anticipation of the better parts. Additionally, children benefit from this as they have not got a fully developed sense of time yet, and it helps to build their awareness of time passing.

At St Alban's every classroom has a visual timetable which the teacher goes through with pupils each day. This particularly helps pupils with attachment-based challenges, autism or anxiety, but all pupils benefit from predictability of the day. We all have an 'Ooops' card which we add when something doesn't quite go to plan.



Upcoming events in the Area

22/1/25 – SEN Parent Coffee Club at School

Useful SEND contacts

SENDIASS: Special Educational Needs and Disability Information, Advice and Support Service www.rotherhamsendiass.org.uk

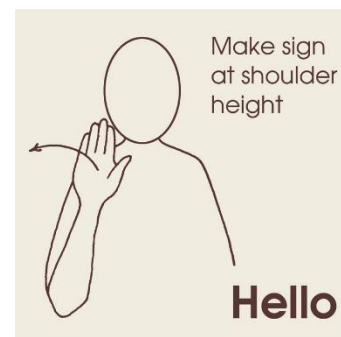
Rotherham Local Offer website
www.rotherhamsendlocaloffer.org.uk

Autism information and advice service (post-diagnosis)
<https://www.autisminformationservice.org.uk/>

Rotherham Parent and Carers Forum – get linked up with other SEND parents
<https://www.rpcf.co.uk/>

Makaton Sign of the Month

Makaton is a language support system used by many children and adults with additional needs. It is closely linked to British Sign Language, although it aims to support rather than replace language.



Did you know...? We have several staff in school who have had their full Makaton training.